

LEARN ENGLISH



CONTENTS

01	COVER
02	CONTENTS
03	WELCOME
04	STUDYING WITH NCG
05	OUR COURSES
06	GENERAL ENGLISH & IELTS
08	WORK WHILE YOU STUDY
09	ADDITIONAL COURSES
10	OUR SCHOOLS
11	MANCHESTER
12	LIVERPOOL
13	DUBLIN
14	YOUR HOME ABROAD
16	BEYOND THE CLASSROOM
18	STUDENT WELFARE
19	FAQS



RECOGNISED QUALITY

All NCG schools are accredited for the teaching of English and are members of leading organisations in the English language field. Two main bodies, the British Council in the UK and ACELS in Ireland, have accredited NCG.

Liverpool & Manchester

Accredited by the
BRITISH COUNCIL
for the teaching
of English in the UK



Dublin



ILEP

Interim List of
Eligible Programmes



WELCOME

At NCG, we believe that nothing should ever get in the way of someone's dream. Whether it's getting ready for a university exam or improving language skills in an English speaking country, we pride ourselves in making your dreams come true.

Studying English is an important investment in your future, which is why our approach is student-centred. We aim to provide high-quality teaching alongside a fulfilling experience, both in and out of the classroom, making memories to last a lifetime.

In our schools, students' safety and wellbeing remains a top priority. NCG follows government guidance to ensure that lessons are delivered in a safe environment.

We look forward to welcoming you into the NCG family and guiding you to support your study goals.

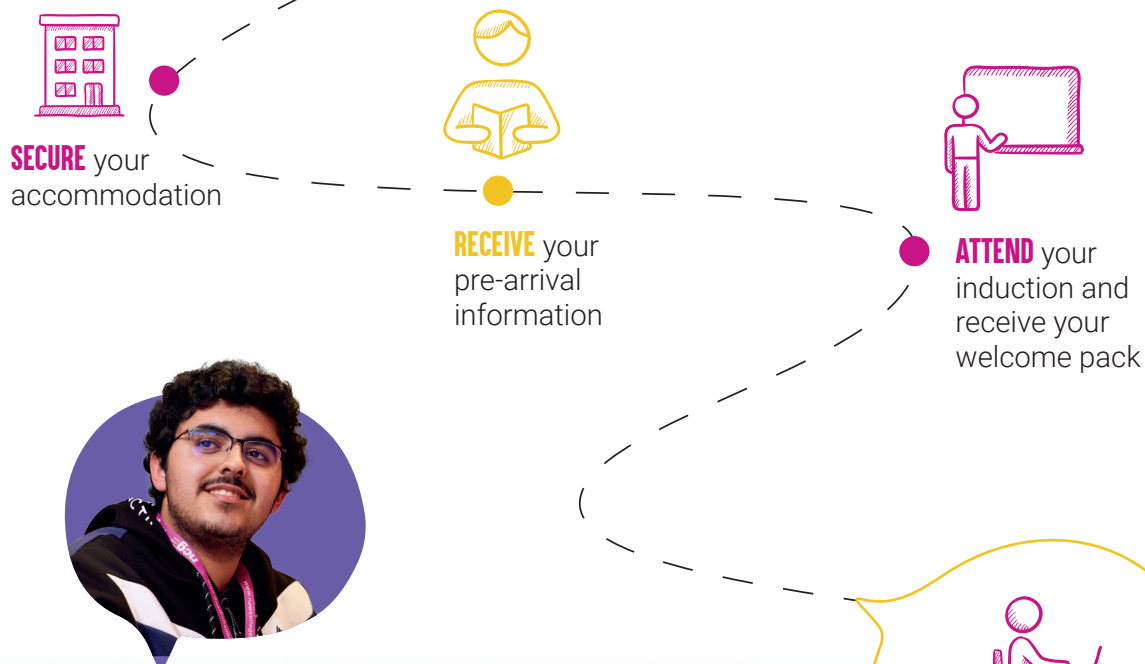
Sadiq Basha
Founder and CEO



STUDYING WITH NCG

We strive to make your experience with NCG as seamless and successful as possible.

Our friendly staff are always on hand to help you when you need them and guide you through your time with us.



CONNECTING THE WORLD THROUGH ENGLISH

By studying English at one of our dedicated schools, you will have unmissable opportunities to learn new skills, experience UK and Irish culture, and make new friends.

From France to Saudi Arabia, Mexico to Turkey, and everywhere in-between, we are proud to welcome students from around the world into the NCG family.



START your classes

OUR COURSES

Our students have one common goal: to improve their English language skills. Choosing the right course for your needs and objectives will help you focus on your personal goals to a time that suits your lifestyle.

Whether you dream of studying at a university abroad or want to grow your confidence in day-to-day English, we are here to advise you on the best option for your studies.

As a minimum, our courses provide:



**A PLACEMENT
TEST ON
ARRIVAL**



**ALL RELEVANT
COURSE
MATERIAL**



**24/7
STUDENT
SUPPORT**



**REGULAR
PROGRESS TESTS
AND TUTOR
FEEDBACK**



**EXTRA-CURRICULAR
LANGUAGE AND
SOCIAL ACTIVITIES**



**END OF
COURSE
CERTIFICATE**



**UNIVERSITY
ADMISSIONS
SUPPORT**

GENERAL ENGLISH & IELTS



GENERAL ENGLISH

From beginner to advanced level, our General English course will provide you with the skills you need to be confident in your studies or work.



THIS COURSE AIMS TO:

- ⇒ Improve your ability to use English.
- ⇒ Develop your core language skills – speaking, listening, writing and reading.
- ⇒ Increase your knowledge of English grammar and vocabulary.
- ⇒ Build your English for international communication.



WHO IS IT FOR?

Our General English course is ideal if you:

- ⇒ Are at any level of English: beginner to advanced.
- ⇒ Want to use English in all contexts, from travel to socialising and business.
- ⇒ Want to improve your overall level before taking an exam preparation course, such as IELTS.

KEY FACTS

- **Location:** Manchester, Liverpool, Dublin
- **Start date:** Every Monday (subject to availability)
- **Level:** Beginner (A1) to Advanced (C1)
- **Lessons:** 15 hours per week
- **Minimum age:** 16 years
- **Maximum class size:** 15



IELTS

Led by experienced teachers with an in-depth knowledge of the exam, our IELTS preparation course will help you to master key English language skills in order to obtain the best results in your preparation for university studies.



THIS COURSE WILL COVER:

- ⇒ How to answer different question types (e.g. *true/false/not given, matching headings*).
- ⇒ How to approach each exam paper.
- ⇒ Reading and listening techniques (e.g. *scanning and skimming a text*).
- ⇒ Using academic language effectively.
- ⇒ Time management.



WHO IS IT FOR?

Our IELTS course is the best choice if you:

- ⇒ Aim to study at a university or educational institution that requires English language certification.
- ⇒ Want to work in an English speaking country.
- ⇒ Want to study academic language and learn techniques to ensure success in your university studies.

KEY FACTS

- **Location:** Manchester, Liverpool, Dublin
- **Start date:** Every Monday (*subject to availability*)
- **Level:** Strong intermediate (B1) or above
- **Lessons:** 15 hours per week
- **Minimum age:** 16 years
- **Maximum class size:** 15



+ SKILLS CLASSES

Delve deeper into the English language and extend your studies with additional skills and focus classes, including dedicated content focusing on IELTS, business, speaking, listening, reading, and writing.

INTENSIVE ENGLISH



**4-5 HOURS OF
SKILLS CLASSES
PER WEEK**

SUPER INTENSIVE ENGLISH



**10 HOURS OF SKILLS
CLASSES PER WEEK**
(available at Manchester
and Liverpool only)

WORK WHILE YOU STUDY



STUDY & WORK

Available exclusively at our Dublin school, this programme allows non-EEA students to work while they study.

Learn how to use English in different contexts and improve your confidence when communicating with people from around the world with the Study & Work programme.



WORK EXPERIENCE

This programme is available exclusively to EU/EAA students who want to apply their classroom knowledge to a working environment.

Strengthen your professional skills and gain first-hand knowledge of your chosen industry whilst participating in an unpaid placement in fields such as hospitality & catering, childcare, tourism, HR, administration, retail, and more.

KEY FACTS

- **Location:** Dublin
- **Duration:** 25 weeks
(plus 10 weeks of holiday)
- **Start date:** Any Monday
(subject to availability)
- **Level:** Elementary (A1) to Advanced (C1)
- **Lessons:** 15/20 hours per week
- **Minimum age:** 18 years

KEY FACTS

- **Location:** Dublin
- **Duration:** Minimum 3-4 weeks, full or part-time
- **Level:** Intermediate (B1) or Strong Intermediate (B2) and above
- **Minimum age:** 16 years
- **Available exclusively to EU/EAA students.**

ADDITIONAL COURSES



BUSINESS ENGLISH

Improve your English grammar and gain the skills needed to function effectively in international business settings.

Key themes include customer relationships, presenting in meetings, advertising & marketing, and sales pitching.

KEY FACTS

- **Location:** Manchester
- **Duration:** 2-52 weeks
- **Start date:** Any Monday
- **Level:** Intermediate (B1) and above
- **Lessons:** 5 hours per week, Monday to Friday.
- **Minimum age:** 16 years
- **Minimum class size:** 15
- **Available as part of an Intensive or Super Intensive course**

BESPOKE COURSES

Want to improve your English language in a specific industry?

Strengthen your professional skills in a chosen field, from business to media management, finance and much more.

Available on request.



OUR SCHOOLS

Our schools are located in some of the best student cities across the UK and Ireland: Manchester, Liverpool and Dublin.

We have developed a strong reputation with international students for our high-quality teaching, friendly staff, and state of the art facilities.



DUBLIN



MANCHESTER



LIVERPOOL



MANCHESTER



Home to the first of our schools, Manchester is a vibrant and bustling city, and a major cultural hub for the North of England. Famous for its stunning architecture, bustling nightlife, and sporting history, it is a fantastic location for both work and play.



YORK

1 hour 40 minutes by car



LAKE DISTRICT

1 hour
30 minutes by car



GETTING AROUND

With great transport links both within the city and cross-country, Manchester is a brilliant base for exploring the UK. Our school is centrally located within the popular Piccadilly Gardens area, allowing you to get out and about with ease.

Distance from NCG Manchester to...



MANCHESTER PICCADILLY TRAIN STATION
4 minutes on foot



ARNDAL SHOPPING CENTRE
6 minutes on foot



MANCHESTER AIRPORT
25 minutes on public transport

LIVERPOOL



A city steeped in history and culture, Liverpool is known globally for being home to busy city streets, Liverpool and Everton Football Clubs and world-famous band, The Beatles, making it an exciting and unique location for our international students to explore during their studies.



**ROYAL
ALBERT DOCK**
10 minutes
on foot

SNOWDONIA

1 hour 40
minutes by car



GETTING AROUND

Liverpool is a maritime city located in the north west of England, and acts as an excellent base for travelling to some of the UK's most popular tourist destinations.

Distance from NCG Liverpool to...



LIVERPOOL ONE SHOPPING CENTRE
1 minute on foot



CHESTER
45 minutes by car



LIVERPOOL JOHN LENNON AIRPORT
40 minutes on public transport

DUBLIN



Our Dublin school is based just outside the city centre, in the beautiful coastal suburb of Dún Laoghaire. An area popular for sunny strolls along the pier and fishing on the harbour, Dún Laoghaire is a peaceful yet pretty town and a great location for students.

DUBLIN CITY CENTRE

35 minutes on public transport



SANDYCOVE BEACH

10 minutes on foot



GETTING AROUND

Our Dublin school is the perfect location for students who want to experience authentic Irish culture in a peaceful yet unique setting. Our school is located close to the harbour, with excellent transport links into the city and beyond.

Distance from NCG Dublin to...



DÚN LAOGHAIRE CENTRE
5 minutes on foot



DÚN LAOGHAIRE HARBOUR
5 minutes on foot



DUBLIN AIRPORT
1 hour on public transport

YOUR HOME ABROAD



We believe quality accommodation benefits academic achievement, which is why we make sure all of our accommodation options are comfortable and convenient for our students.

Choose to live independently in one of our excellent residence options, or develop new relationships and practise your English listening and speaking skills by living with a local homestay host.

HOMESTAY

Living with a homestay host is the best way to get a deep insight into local culture and further practise your English language skills. By choosing to spend your time in the UK with a homestay host, you will have the opportunity to develop new relationships with locals and experience a **'home away from home'**.



RESIDENCE

By living in residential accommodation, you will have the chance to make friends with students from all over the world and enjoy your independence throughout your studies. Our residential accommodation providers are local to our schools and are the perfect option for those wishing to live independently whilst away from home.



MY STUDENT RESIDENCE IS JUST A 5-MINUTE WALK FROM NCG MANCHESTER AND HAS ALL THE FACILITIES I NEED. AFTER MY CLASSES, I SPEND TIME IN A STUDY ROOM OR GO BOWLING WITH OTHER STUDENTS IN THE GAMES AREA. IT'S A GREAT PLACE TO SOCIALISE AND MAKE FRIENDS!"

THOMAS
France





BEYOND THE CLASSROOM

Some of the most important lessons you will learn throughout your student journey may take place outside of the classroom.

Meet new friends, have fun, and make the most of your time in the UK by participating in our school clubs and extra-curricular activities.

SCHOOL CLUBS INCLUDE:

- ⇒ Conversation Club
- ⇒ Debate Club
- ⇒ Student Council



EXTRA-CURRICULAR ACTIVITIES

We organise regular activities outside of school hours, encouraging you to enjoy your free time and practice your English in new environments.

From cultural events and sporting activities, to city tours and arts & crafts, you will never be lost for things to do.



WEEKEND TRIPS

Working with local travel partners, we offer students unmissable opportunities to explore the UK and Ireland even further with our weekend activity trips.

Available most weekends for just a small fee, you will have the chance to join us on an exciting trip, which may include anything from watching a live Premier League football match to exploring the countryside at famous national parks, or catching a thrill at a theme park.



PREVIOUS ACTIVITIES HAVE INCLUDED:

- ⇒ National Day events
- ⇒ Tournaments and quizzes
- ⇒ Bake sales
- ⇒ Galway City, Ireland visit
- ⇒ Old Trafford football stadium tour
- ⇒ City walking tours
- ⇒ Table tennis
- ⇒ Bowling
- ⇒ Go karting



STUDENT WELFARE



We understand that safety is a primary concern when travelling away from home. That's why we have a range of measures in place to ensure you have access to the advice and guidance you need throughout your time at NCG.



Our friendly and approachable safeguarding and welfare teams are available 24/7, providing assistance and advice on personal and social concerns.



All of our staff, homestay hosts, transfer drivers, and external contractors have been vetted, and background checks carried out (where necessary).



Strict processes are in place for monitoring the health and safety standards of all student accommodation.



A colour-coded lanyard system helps identify staff, students and visitors.



Emergency first aid and fire safety trained staff are present on the school premises during opening hours, and first aid equipment is available throughout the school premises.



Additional safety measures are in place for 16 -17 year olds studying on our adult course.

FAQS



GENERAL

How do I know which course is right for me?

If you are struggling to choose a course to suit your needs, our friendly team are on hand to help guide you. Call us on **+44 (0) 161 233 4290** or email the team at **info@newcollegegroup.com** for more information.

How do I know which school is right for me?

Once you have chosen which course you would like to study, check which school it is available at. If you are able to study your chosen course at any of our schools, visit our dedicated school web pages for more information about the benefits of each location.

APPLYING

How do I apply to study at NCG?

We are delighted that you're interested in studying with NCG. Applying is quick and easy and can be done online at **www.newcollegegroup.com/onlineapplication** or by visiting our friendly team at any of our school locations.

What documents do I need when applying?

To apply to study with us you will need to provide a copy of your passport.

How do I pay for my course?

There are a number of methods for payment available. A full list of options can be found at **www.newcollegegroup.com/how-to-pay-us**.

Can I get help applying for my visa?

Although we are not responsible for obtaining a valid visa for you, we do provide offer and visa letters. Please contact **admissions@newcollegegroup.com** for more information.



STAFF ARE ALWAYS THERE TO TALK TO AND HELP WITH YOUR QUESTIONS ABOUT THE CITY."

ATILAY Turkey

STUDY ENGLISH WITH NCG.

GET IN TOUCH

Online: newcollegigroup.com

By phone: +44 (0)161 233 4290

By email: info@newcollegigroup.com

In your country of residence: Via local NCG partner

Disclaimer:

This document is intended as a general guide for international students and does not form part of any contract. Although New College Group have taken care to ensure that all information is accurate at the point of going to press in 2023, information is subject to change and we cannot guarantee that all information is current. New College Group is not liable for any damage or loss resulting from any information provided in this publication.