

CONNECTING THE WORLD  
THROUGH ENGLISH

# LEARN ENGLISH



# OUR SCHOOLS

Our schools are located in some of the best student cities across the UK: Manchester and Liverpool.

We have developed a strong reputation with international students for our high-quality teaching, friendly staff, and state of the art facilities.



## NORTH WEST, UK

The North West of England is home to gorgeous lakes, revolutionary cities, as well as some world-famous sports teams such as Manchester United FC, Manchester City FC, Liverpool FC and Everton FC.

The student population is huge, with over 200,000 students spread over eight universities. There are more than 75,000 students in Manchester alone.



## LIVERPOOL



## MANCHESTER



# WELCOME

At NCG, we believe that nothing should ever get in the way of someone's dream. Whether it's getting ready for a university exam or improving language skills in an English speaking country, we pride ourselves in making your dreams come true.

Studying English is an important investment in your future, which is why our approach is student-centred. We aim to provide high-quality teaching alongside a fulfilling experience, both in and out of the classroom, making memories to last a lifetime.

In our schools, students' safety and wellbeing remains a top priority. NCG follows government guidance to ensure that lessons are delivered in a safe environment.

We look forward to welcoming you into the NCG family and guiding you to support your study goals.

**Sadiq Basha**  
Founder and CEO



## RECOGNISED QUALITY

All NCG schools are accredited for the teaching of English and are members of leading organisations in the English language field.

Accredited by the  
**BRITISH COUNCIL**  
for the teaching  
of English in the UK

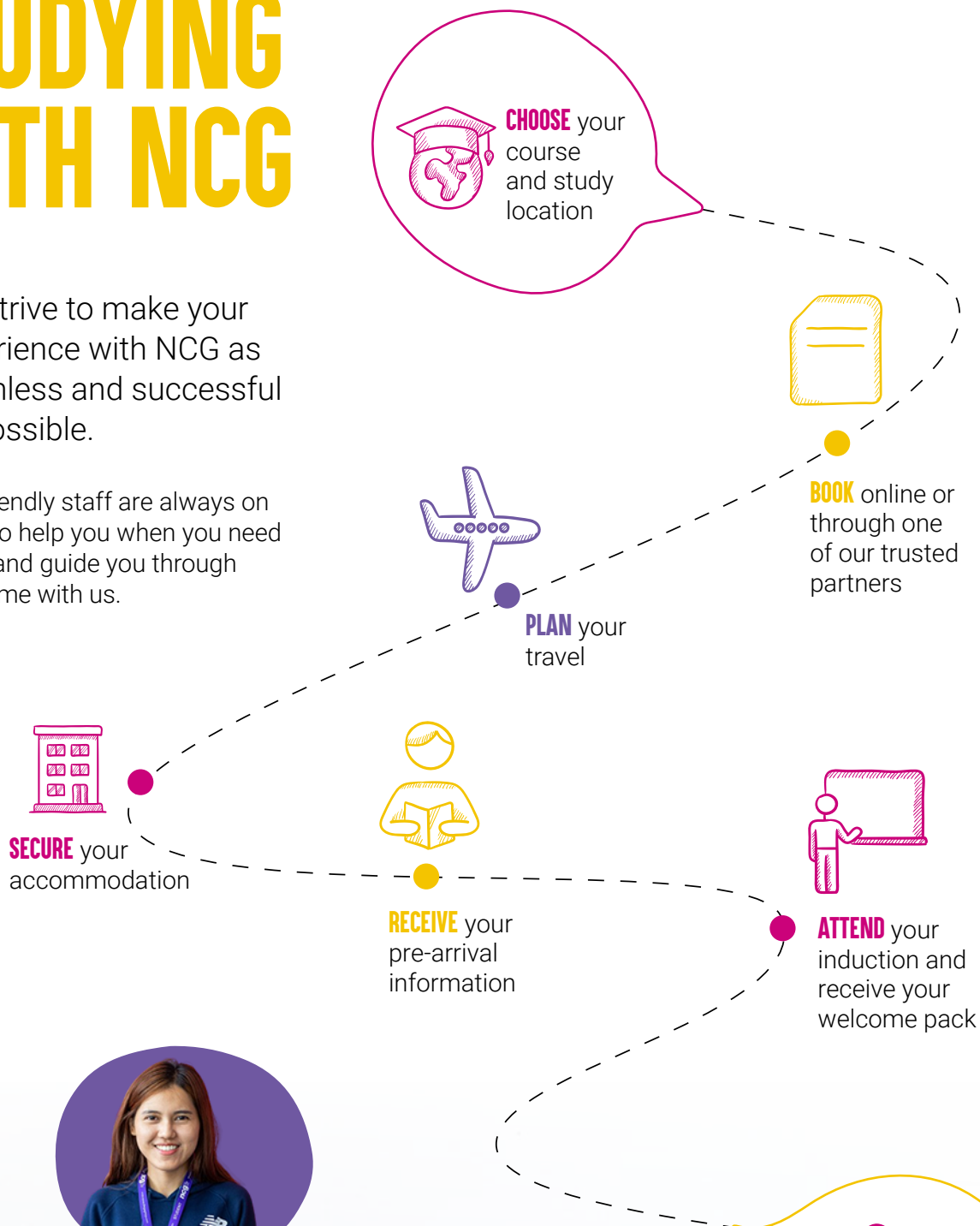
MEMBER  
**ENGLISH UK**



# STUDYING WITH NCG

We strive to make your experience with NCG as seamless and successful as possible.

Our friendly staff are always on hand to help you when you need them and guide you through your time with us.



## CONNECTING THE WORLD THROUGH ENGLISH

By studying English at one of our dedicated schools, you will have unmissable opportunities to learn new skills, experience UK culture, and make new friends.

From France to Saudi Arabia, Mexico to Turkey, and everywhere in-between, we are proud to welcome students from around the world into the NCG family.



**START** your classes



# OUR COURSES

Our students have one common goal: to improve their English language skills. Choosing the right course for your needs and objectives will help you focus on your personal goals to a time that suits your lifestyle.

Whether you dream of studying at a university abroad or want to grow your confidence in day-to-day English, we are here to advise you on the best option for your studies.

**As a minimum, our courses provide:**



**A PLACEMENT  
TEST ON  
ARRIVAL**



**ALL RELEVANT  
COURSE  
MATERIAL**



**24/7  
STUDENT  
SUPPORT**



**REGULAR  
PROGRESS TESTS  
AND TUTOR  
FEEDBACK**



**EXTRA-CURRICULAR  
LANGUAGE AND  
SOCIAL ACTIVITIES**



**END OF  
COURSE  
CERTIFICATE**



**UNIVERSITY  
ADMISSIONS  
SUPPORT**

# GENERAL ENGLISH



From beginner to advanced level, our General English course will provide you with the skills you need to be confident in your studies or work.



## THIS COURSE AIMS TO:

- Improve your ability to use English.
- Develop your core language skills – speaking, listening, writing and reading.
- Increase your knowledge of English grammar and vocabulary.
- Build your English for international communication.



## WHO IS IT FOR?

Our General English course is ideal if you:

- Are at any level of English: beginner to advanced.
- Want to use English in all contexts, from travel to socialising and business.
- Want to improve your overall level before taking an exam preparation course, such as IELTS.

## KEY FACTS

- **Location:** Manchester and Liverpool.
- **Start date:** Every Monday (subject to availability)
- **Level:** Beginner (A1) to Advanced (C1)
- **Lessons:** 15 hours per week
- **Minimum age:** 16 years
- **Maximum class size:** 15

## ACADEMIC YEAR COURSES

**Study English for twenty-four weeks or more in Manchester or Liverpool!**

Structured like a real university year, our English Academic Year courses aim to take you from your current level of English up to a very high level of fluency.



# PATHWAY TO IELTS

Led by experienced teachers with an in-depth knowledge of the exam, our IELTS preparation course will help you to master key English language skills in order to obtain the best results in your preparation for university studies.



## THIS COURSE WILL COVER:

- ⇒ How to answer different question types (e.g. true/false/not given, matching headings).
- ⇒ How to approach each exam paper.
- ⇒ Reading and listening techniques (e.g. scanning and skimming a text).
- ⇒ Using academic language effectively.
- ⇒ Time management.



## WHO IS IT FOR?

**Our IELTS course is the best choice if you:**

- ⇒ Aim to study at a university or educational institution that requires English language certification.
- ⇒ Want to work in an English speaking country.
- ⇒ Want to study academic language and learn techniques to ensure success in your university studies.



## IELTS TEST VENUE

NCG Manchester & Liverpool are now official IELTS test venues, meaning you can both prepare for and take your IELTS test all in one place. You will be supported throughout the whole process, from preparation to booking your test.

NCG students are best placed to get a great IELTS score!

## KEY FACTS

- **Location:** Manchester and Liverpool
- **Start date:** Every Monday (subject to availability)
- **Level:** Strong intermediate (B1) or above
- **Lessons:** 15 hours per week
- **Minimum age:** 16 years
- **Maximum class size:** 15





# SKILLS & FOCUS CLASSES



Delve deeper into the English language and extend your studies with additional skills and focus classes, including dedicated content focusing on IELTS, business, speaking, listening, reading, and writing.

Choose to take either 6 or 10 additional hours per week to make your General English or IELTS Preparation course intensive (21 hours) or super intensive (25 hours).

## KEY FACTS

- **Location:** Manchester and Liverpool
- **Start date:** Every Monday (subject to availability)
- **Level:** Beginner (A1) to Advanced (C1)
- **Minimum age:** 16 years
- **Maximum class size:** 15

## INTENSIVE ENGLISH



**STANDARD TUITION (15 HOURS)**  
**4 HOURS OF SKILLS CLASSES**  
**2 HOURS OF FOCUS CLASSES**

Skills classes are a great way to supplement your English tuition, allowing you to improve your language skills quicker and in a more focused environment. Study a skills subject that suits your learning requirements and intensify your English language course to get results fast.

## SUPER INTENSIVE ENGLISH



**STANDARD TUITION (15 HOURS)**  
**4-8 HOURS OF SKILLS CLASSES**  
**2-6 HOURS OF FOCUS CLASSES**

With Focus classes, you are able to tailor your area of additional specialisation every month according to your requirements.

### FOCUS CLASS OPTIONS INCLUDE

- ⇒ Business English Focus
- ⇒ Writing, Speaking, Listening or Reading Focus
- ⇒ Functional Language Focus
- ⇒ Graphic Design
- ⇒ Current Affairs Focus

# ADDITIONAL COURSES



## BUSINESS ENGLISH

Improve your English grammar and gain the skills needed to function effectively in international business settings.

Key themes include customer relationships, presenting in meetings, advertising & marketing, and sales pitching.

### KEY FACTS

- **Location:** Manchester and Liverpool
- **Duration:** 2-52 weeks
- **Start date:** Any Monday
- **Level:** Intermediate (B1) and above
- **Lessons:** 5 hours per week, Monday to Friday.
- **Minimum age:** 16 years
- **Minimum class size:** 15
- **Available as part of an Intensive or Super Intensive course**

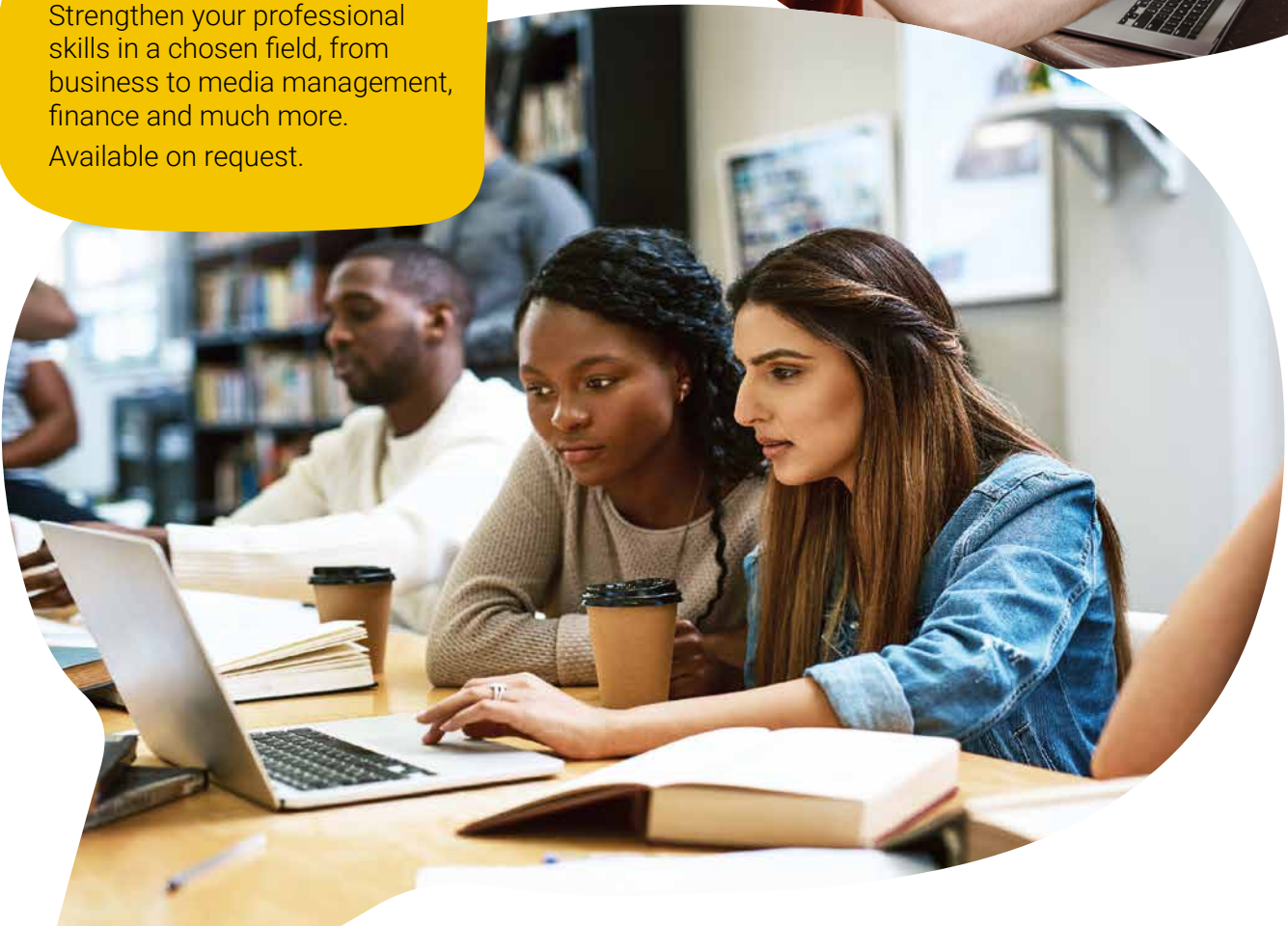


## BESPOKE COURSES

**Want to improve your English language in a specific industry?**

Strengthen your professional skills in a chosen field, from business to media management, finance and much more.

Available on request.







# GROUP STAYS

## WHO IS THE PROGRAMME FOR?

NCG offers programmes for adults and junior groups at both our Manchester and Liverpool schools. Interested in an exciting programme for a group of students at any point during the year? Join any of our NCG locations for a city and educational adventure.

### KEY FACTS

- **Minimum level :** All levels
- **Location:** Manchester and Liverpool
- **Minimum program duration:** 1 week
- **Student Age:** As per request

### VISITS TO TOP UK UNIVERSITIES



## WEEKLY PACKAGE

- ⇒ 15 hours of General English
- ⇒ Homestay twin or residence with full board option for both students and group leaders
- ⇒ Customisable programme of activities & excursions from university visits to football tours and sight seeing trips!\*
- ⇒ Medical insurance
- ⇒ Return airport pick up service
- ⇒ City tour
- ⇒ Graduation party and end-of course certificate

### SAMPLE TIMETABLE FOR MINI-STAYS PROGRAMME

Sunday	Monday	Tuesday	Wednesday	Thursday	Friday	Saturday	Sunday
Arrival at airport, transport to accommodation.	Welcome, induction & lesson at the school	Lesson at the school	Lesson at the school	Lesson at the school	Lesson at the school	Optional Activity/Excursion	Departure to Airport
	Packed lunch	Packed lunch	Packed lunch	Packed lunch	Packed lunch		
	Welcome tour of city centre	Free afternoon with group leader or optional social activity	Free afternoon with group leader or optional social activity	Free afternoon with group leader or optional social activity	Free afternoon with group leader or optional social activity		
Dinner at homestay / residence							

Morning lessons are not guaranteed – dependent on availability  
 \*Some excursions at a supplementary cost



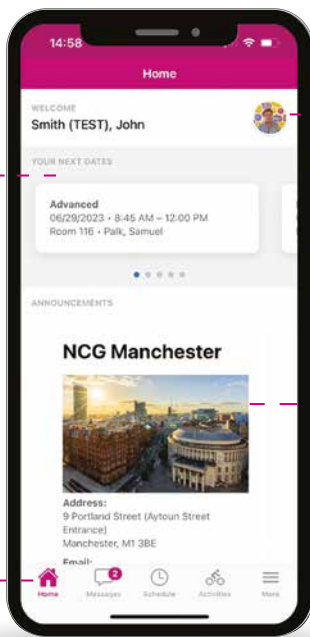
# NCG STUDENT APP

At NCG we provide a personalised app to all our students, tailored to your unique NCG journey, to ensure your experience with us is seamless.

## APP FEATURES

- **Seamless Class and Activity Booking:** Schedule and manage your classes and extracurricular activities.
- **Accommodation Management:** Check all your accommodation details within the app.
- **24/7 Support:** Our app provides 24/7 support to address your concerns promptly, ensuring a smooth and supported journey.
- **Direct Communication with Staff:** Seamless communication to seek guidance, work on projects, and maximize your learning potential.

Check your timetable and information on upcoming dates.

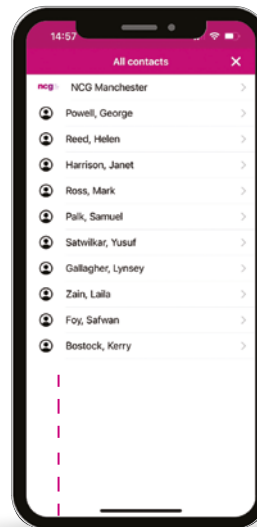


Home screen options

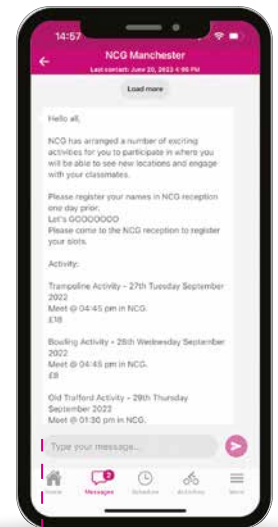
View your profile:

- Student ID
- Email
- Emergency contact

New announcements and details about the college.



Ability to communicate with your teachers.



Messages will be sent directly to your app from the college with any urgent or important information.

AVAILABLE IN THE APPLE APP STORE OR GOOGLE PLAY

# MANCHESTER



Home to the first of our schools, Manchester is a vibrant and bustling city, and a major cultural hub for the North of England. Famous for its stunning architecture, bustling nightlife, and sporting history, it is a fantastic location for both work and play.



**YORK**  
1 hour 40 minutes by car



**LAKE DISTRICT**  
1 hour 30 minutes by car



## GETTING AROUND

With great transport links both within the city and cross-country, Manchester is a brilliant base for exploring the UK. Our school is centrally located within the popular Piccadilly Gardens area, allowing you to get out and about with ease.

### Distance from NCG Manchester to...



**MANCHESTER PICCADILLY TRAIN STATION**  
4 minutes on foot



**ARNDALE SHOPPING CENTRE**  
6 minutes on foot



**MANCHESTER AIRPORT**  
25 minutes on public transport



# LIVERPOOL



A city steeped in history and culture, Liverpool is known globally for being home to busy city streets, Liverpool and Everton Football Clubs and world-famous band, The Beatles, making it an exciting and unique location for our international students to explore during their studies.



**ROYAL ALBERT DOCK**  
10 minutes on foot

**SNOWDONIA**  
1 hour 40 minutes by car



## GETTING AROUND

Liverpool is a maritime city located in the north west of England, and acts as an excellent base for travelling to some of the UK's most popular tourist destinations.

Distance from NCG Liverpool to...

-  **LIVERPOOL ONE SHOPPING CENTRE**  
1 minute on foot
-  **CHESTER**  
45 minutes by car
-  **LIVERPOOL JOHN LENNON AIRPORT**  
40 minutes on public transport



# YOUR HOME ABROAD



We believe quality accommodation benefits academic achievement, which is why we make sure all of our accommodation options are comfortable and convenient for our students.

Choose to live independently in one of our excellent residence options, or develop new relationships and practise your English listening and speaking skills by living with a local homestay host.

## HOMESTAY

Living with a homestay host is the best way to get a deep insight into local culture and further practise your English language skills. By choosing to spend your time in the UK with a homestay host, you will have the opportunity to develop new relationships with locals and experience a **'home away from home'**.



# RESIDENCE

By living in residential accommodation, you will have the chance to make friends with students from all over the world and enjoy your independence throughout your studies. Our residential accommodation providers are local to our schools and are the perfect option for those wishing to live independently whilst away from home.



**MY STUDENT RESIDENCE IS JUST A 5-MINUTE WALK FROM NCG MANCHESTER AND HAS ALL THE FACILITIES I NEED. AFTER MY CLASSES, I SPEND TIME IN A STUDY ROOM OR GO BOWLING WITH OTHER STUDENTS IN THE GAMES AREA. IT'S A GREAT PLACE TO SOCIALISE AND MAKE FRIENDS!"**

**THOMAS**  
France







### Liverpool Map by Inge Panneels and Jeffrey Sarmiento, 2010

The unique Liverpool Map depicts the city as a place defined by culture and heritage, rather than geographical and political boundaries.

Local people were involved in the creation of the map by voting on the Liverpool Daily Post and through a series of workshops. They contributed handwritten pieces about the city, some of which you can see embedded within the hand-drawn glass design.

The artwork is a lasting legacy of Liverpool's year as European Capital of Culture in 2008. It was commissioned by the Museum of Liverpool in association with Open Culture, Liverpool Culture Company and the Liverpool Daily Post.

Thank you to everyone who contributed.

Generously supported by Professor Phil Redmond CBE and Mrs Jean Redmond MBE, Open Culture, Peabody Trust and the National Glass Centre at the University of Sunderland.



# BEYOND THE CLASSROOM

Some of the most important lessons you will learn throughout your student journey may take place outside of the classroom.

Meet new friends, have fun, and make the most of your time in the UK by participating in our school clubs and extra-curricular activities.

## SCHOOL CLUBS INCLUDE:

- ⇒ Conversation Club
- ⇒ Debate Club
- ⇒ Student Council





## EXTRA-CURRICULAR ACTIVITIES

We organise regular activities outside of school hours, encouraging you to enjoy your free time and practice your English in new environments.

From cultural events and sporting activities, to city tours and arts & crafts, you will never be lost for things to do.



### CHESTER

Enjoy a trip to the historic city



## WEEKEND TRIPS

Working with local travel partners, we offer students unmissable opportunities to explore the UK even further with our weekend activity trips.

Available most weekends for just a small fee, you will have the chance to join us on an exciting trip, which may include anything from watching a live Premier League football match to exploring the countryside at famous national parks, or catching a thrill at a theme park.

### LAKE DISTRICT

Explore the scenic beauty.



## PREVIOUS ACTIVITIES HAVE INCLUDED:

- ⇒ Tournaments and quizzes
- ⇒ Kayaking
- ⇒ Old Trafford football stadium tour
- ⇒ City walking tours
- ⇒ FIFA competitions
- ⇒ Bowling
- ⇒ Go karting



# STUDENT WELFARE



We understand that safety is a primary concern when travelling away from home. That's why we have a range of measures in place to ensure you have access to the advice and guidance you need throughout your time at NCG.



Our friendly and approachable safeguarding and welfare teams are available 24/7, providing assistance and advice on personal and social concerns.



All of our staff, homestay hosts, transfer drivers, and external contractors have been vetted, and background checks carried out (where necessary).



Strict processes are in place for monitoring the health and safety standards of all student accommodation.



A colour-coded lanyard system helps identify staff, students and visitors.



Emergency first aid and fire safety trained staff are present on the school premises during opening hours, and first aid equipment is available throughout the school premises.



Additional safety measures are in place for 16 -17 year olds studying on our adult course.

# FAQS



## GENERAL

### How do I know which course is right for me?

If you are struggling to choose a course to suit your needs, our friendly team are on hand to help guide you. Call us on **+44 (0) 161 233 4290** or email the team at **info@newcollegegroup.com** for more information.

### How do I know which school is right for me?

Once you have chosen which course you would like to study, check which school it is available at. If you are able to study your chosen course at any of our schools, visit our dedicated school web pages for more information about the benefits of each location.

## APPLYING

### How do I apply to study at NCG?

We are delighted that you're interested in studying with NCG. Applying is quick and easy and can be done online at **www.newcollegegroup.com/how-to-apply** or by visiting our friendly team at any of our school locations.

### What documents do I need when applying?

To apply to study with us you will need to provide a copy of your passport.

### How do I pay for my course?

There are a number of methods for payment available. A full list of options can be found at **www.newcollegegroup.com/how-to-pay/**

### Can I get help applying for my visa?

Although we are not responsible for obtaining a valid visa for you, we do provide offer and visa letters. Please contact **admissions@newcollegegroup.com** for more information.



# STUDY ENGLISH WITH NCG.

## GET IN TOUCH

**Online:** [newcollegegroup.com](https://www.newcollegegroup.com)

**By phone:** +44 (0)161 233 4290

**By email:** [info@newcollegegroup.com](mailto:info@newcollegegroup.com)

**In your country of residence:** Via local NCG partner

### Disclaimer:

This document is intended as a general guide for international students and does not form part of any contract. Although New College Group have taken care to ensure that all information is accurate at the point of going to press in 2024, information is subject to change and we cannot guarantee that all information is current. New College Group is not liable for any damage or loss resulting from any information provided in this publication.